



GASP Archives - Copyright 2026

Vogue 9205 (1957-1960) PDF File Size 12 Bust 32 Hip 34

PDF File 1 of 2:

- Envelope front and back
- One page instruction sheet printed both sides

PDF File 2 of 2:

- Five printed pieces.
- Additional scan of piece 3 as altered by widening.

PDF file is left open for personal use with Adobe Illustrator/InkScape/Canva-Affinity or similar. Format is A0 but may print as A4 with Adobe tiling/poster instructions. Scans are of the original pattern, not to be resold or offered on any other website, pattern database or social platform.

9205-75c IN CANADA 85c

SIZE 12 BUST 32 HIP 34

VOGUE



Private Collection:
Kathleen Constance Parnell Champagne
GASP Archives @XxGASPxx

**PRINTED
PATTERN**



9205 One piece dress

All around gathered skirt joins the bodice at waist-line. Front buttoned closing below wide, low neck-line. Above elbow length gathered sleeves joined to drop shoulder armholes and sleeveless: Novelty belt.

Yardage

No allowance for matching plaid or stripes.

Misses Sizes	10	12	14	16	18
Bust	31	32	34	36	38

View A

35" Without Nap†	6 1/8	6 1/4	6 3/8	6 1/2	6 5/8
39" Without Nap†	6	6 1/8	6 1/4	6 1/4	6 3/8
45" Without Nap†	5 5/8	5 3/4	6 1/8	6 1/8	6 1/4

View B

35" Without Nap†	4 3/4	4 7/8	4 7/8	4 7/8	5
39" Without Nap†	4 5/8	4 3/4	4 3/4	4 7/8	5

Bodice lining

35"	1	1	1	1	1
39"	7/8	7/8	7/8	1	1

Underskirt

35" or 39" Without Nap†	3 7/8	3 7/8	3 7/8	4	4
-------------------------	-------	-------	-------	---	---

3/4" grosgrain belting for inside belt	3/4	3/4	7/8	7/8	1
--	-----	-----	-----	-----	---

12" Dress Placket Zipper

Length of View A at centre-back from natural neck-line 45 1/2 46 1/2 47 47 1/2 48

Length of View B at centre-back from natural neck-line 45 46 46 1/2 47 47 1/2

Width at lower edge of Dress in size 14 is 128" (about 3 1/2 yards)

3" Hem allowed on View B

10" Hem allowed on View A

†Without nap or pile or with a two-way design.

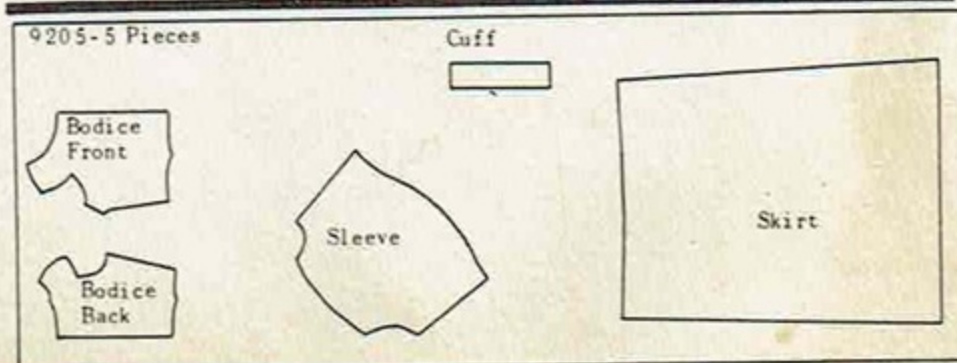
Fabric suggestions

Voile - Batiste - Lawn - Dotted swiss - Eyelet - Chiffon
Sheer gingham - Dimity - Chambray - Organdie
Surah - Silk organdie - Shantung - Crepe



Reminder

Matching thread, buttonhole twist, ribbon seam binding, buttons, hooks and eyes, novelty belt.



PRINTED IN U. S. A.

Private Collection:

Kathleen Constance Parnell Champagne

GASP Archives @XxGASPxx

VOGUE PATTERN SERVICE

THE CONDÉ NAST PUBLICATIONS INC. • 8 WEST 40TH ST. • NEW YORK

Please Read

If you are an experienced sewer, all you need is Sheet #1

If you are less experienced, also use Sheet #2

step 1

Compare your actual measurements with the standard measurements shown on Instruction Sheet #2. Your pattern was made from these measurements and includes the proper allowance for ease of movement.

If, after checking your measurements, you find it necessary to make alterations in your pattern, do so before cutting the fabric.

Instructions for major alterations most frequently required are given on the General Sewing Instruction Sheet #2 immediately following the measurement chart.

step 2

LOOK AT PATTERN

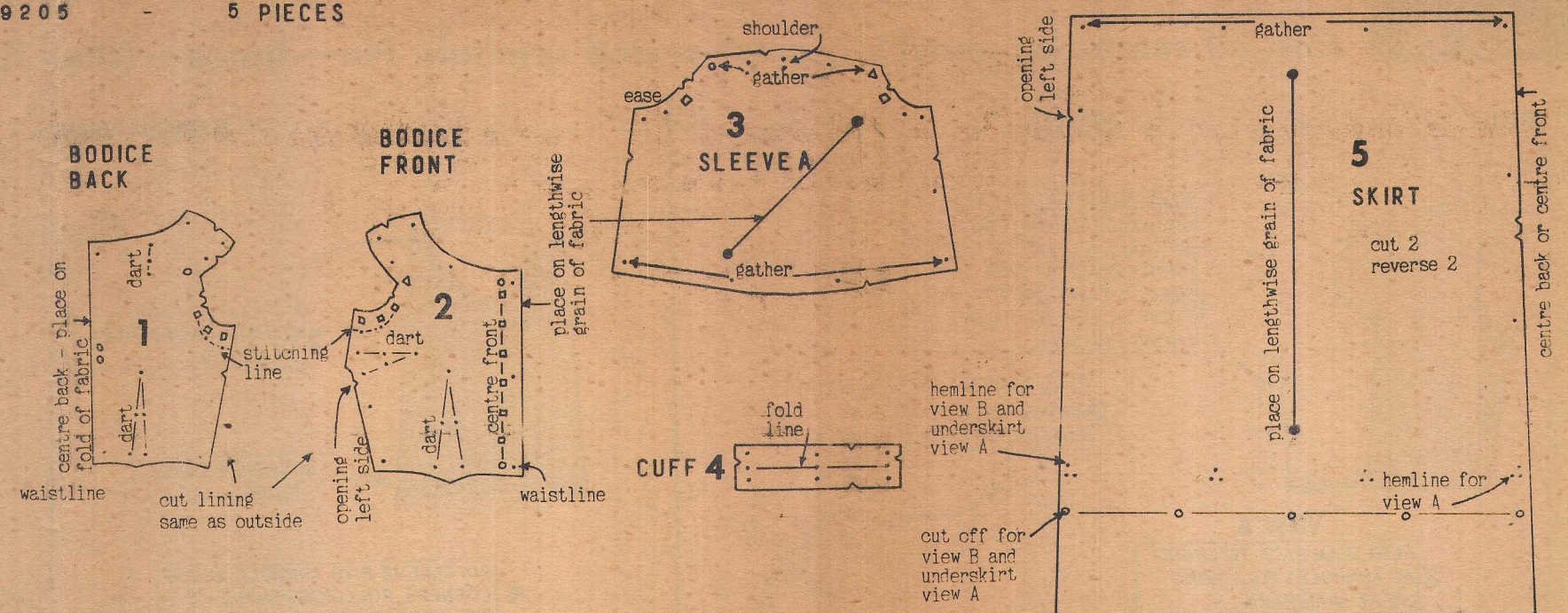
There are 5 pieces numbered in the order they are used in sewing

There are printed directions on each piece — read them as you go along

Pattern is given for right half of garment only, if both sides are alike. Left half comes into being as you cut

9205

5 PIECES



step 3

PREPARE YOUR FABRIC FOR CUTTING (detailed directions are on Sheet #2)

step 4

CUTTING LAYOUTS

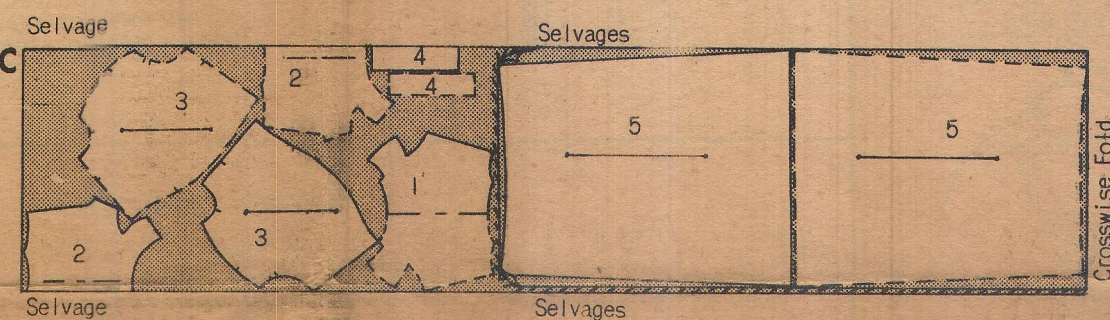
Shading denotes fabric

9205

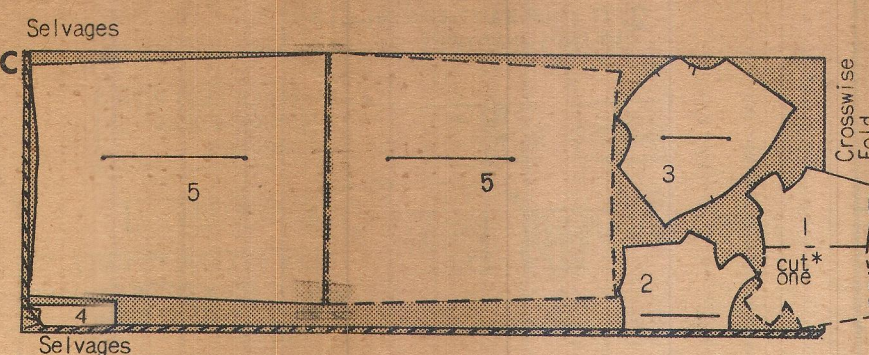


VIEW A Use all pieces

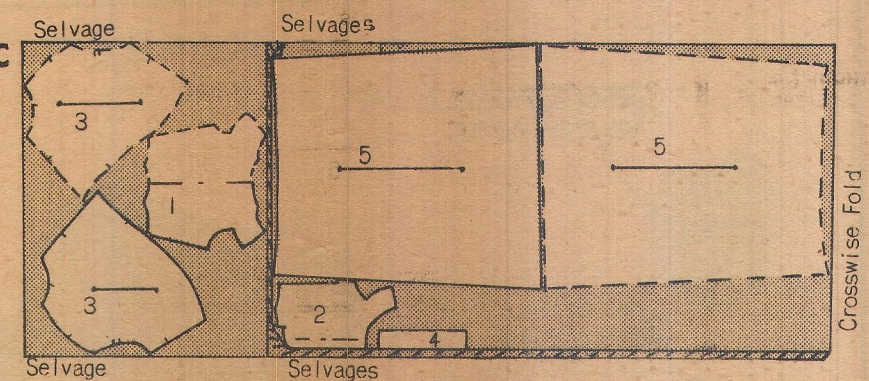
35" FABRIC
WITHOUT NAP
All Sizes



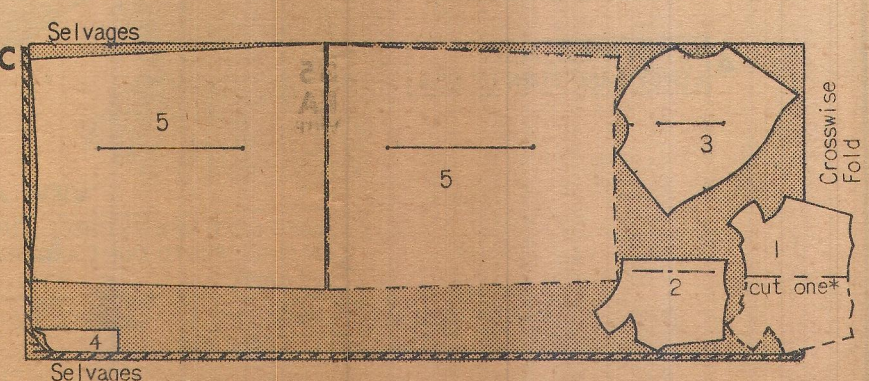
39" FABRIC
WITHOUT NAP
All Sizes



45" FABRIC
WITHOUT NAP
Sizes 10
12



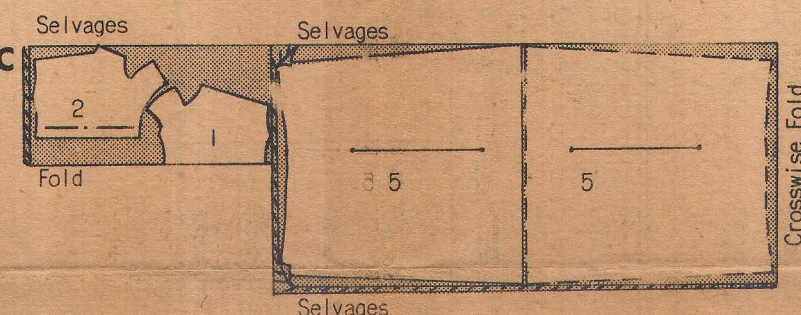
45" FABRIC
WITHOUT NAP
Sizes 14
16
18



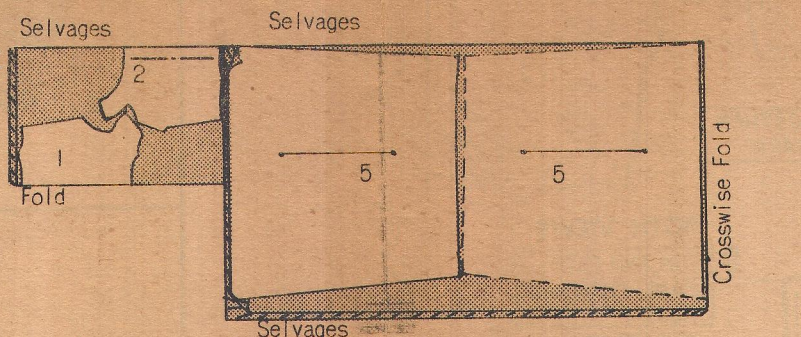
*Open fabric right side up to cut pieces marked cut one.

VIEW B Use all pieces except 3, 4

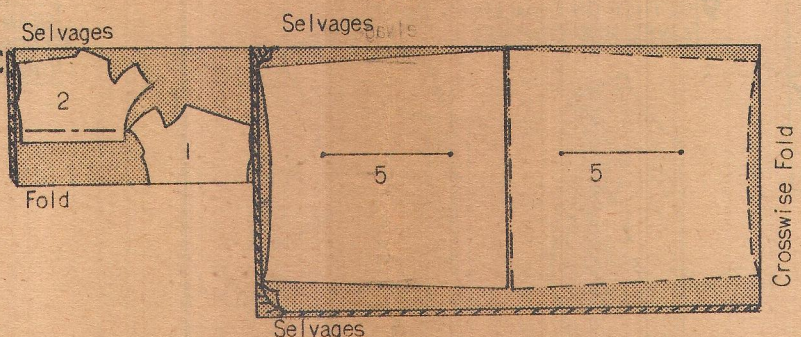
35" FABRIC
WITHOUT NAP
All Sizes



39" FABRIC
WITHOUT NAP
Sizes 10
12
14

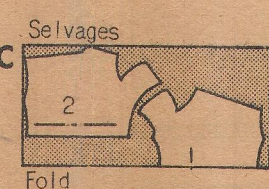


39" FABRIC
WITHOUT NAP
Sizes 16
18

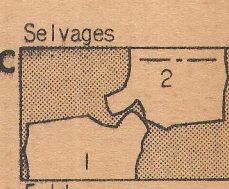


BODICE LINING Use pieces 1, 2

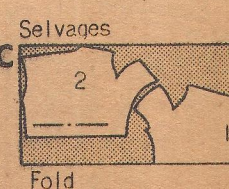
35" FABRIC
All Sizes



39" FABRIC
Sizes 10
12
14

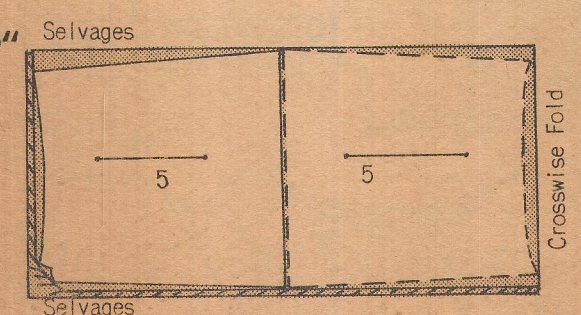


39" FABRIC
Sizes 16
18



UNDERSKIRT Use piece 5

35" OR 39" FABRIC
WITHOUT NAP
All Sizes



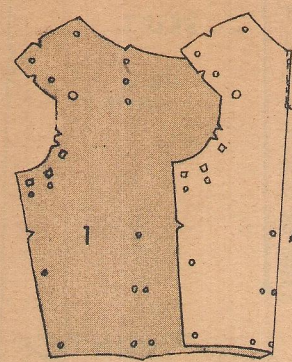
step 5

Do not remove pattern until after you have transferred all construction symbols or printed lines to fabric. Refer to MARKING on Sheet #2.

step 6 Join all seams by matching notches and symbols. Pin—baste—(then fit)—stitch—finish—and press all seams

Shading denotes right side of fabric

9205

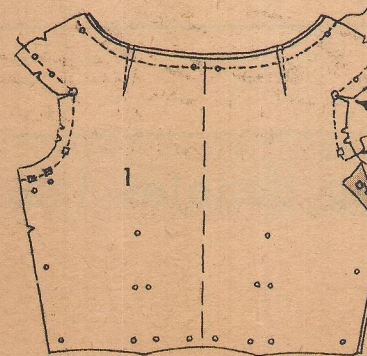
BODICE

MAKE DARTS BELOW NECK OF BODICE BACK 1; CREASE ON SMALL \circ 'S, STITCH 1/8" FROM CREASE AT TOP SMALL \circ TAPERING TO POINT AT LOWEST \circ . DART LINING THE SAME

2 SEAM BACK TO LINING NECK, WRONG SIDE OF LINING TO OUTSIDE OF BODICE

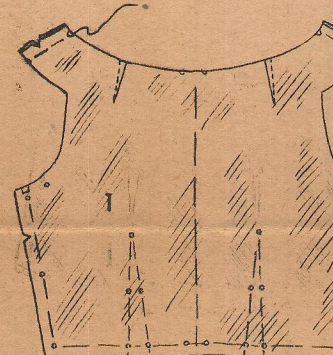
VIEW B

3 ALSO SEAM BACK TO LINING AT ARMHOLES FOLLOWING \square 'S AT UNDERARM

**BOTH VIEWS**

4 TRIM AND CLIP SEAMS. TURN AND PRESS

5 BASTE LINING AND BODICE TOGETHER ON SEAM LINES AND DART LINES AND HANDLE LIKE A SINGLE LAYER OF FABRIC

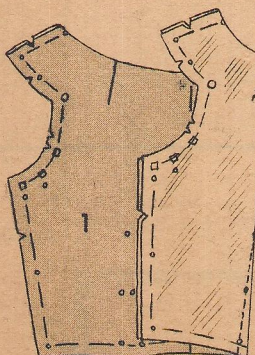
**VIEW B**

7 ALSO SEAM ARMHOLES TOGETHER, FOLLOWING \square 'S AT UNDERARM

BOTH VIEWS

8 TRIM AND CLIP SEAMS. TURN AND PRESS

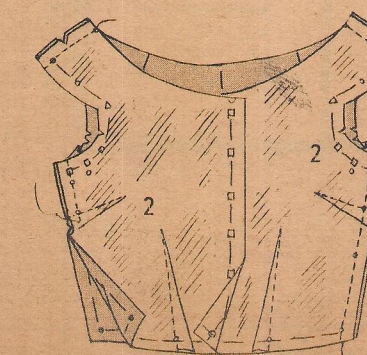
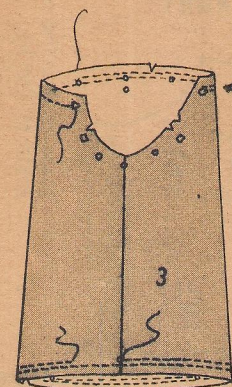
9 BASTE LINING AND BODICE TOGETHER ON SEAM LINES, DART LINES, AND CENTRES



10 MAKE DARTS ON BODICE BACK 1 AND BODICE FRONT 2

11 SEAM SHOULDERS AND SIDES. LEAVE LEFT SIDE OPEN BELOW V

12 TURN IN ENDS OF SEAMS ON SLANT AT FINISHED EDGES. HEM TO LINING

**SLEEVES—VIEW A**

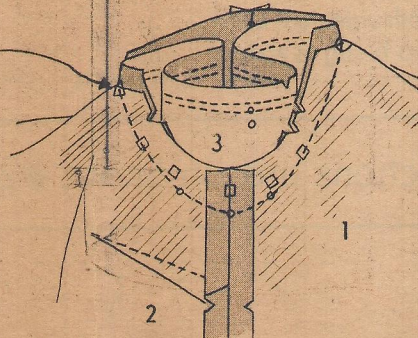
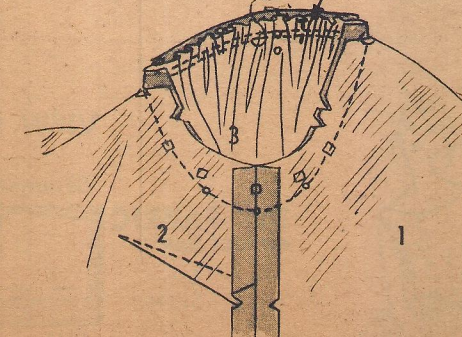
1 SEAM SLEEVE

2 GATHER TOP BETWEEN Δ -LARGE \circ

3 GATHER LOWER EDGE

4 PIN SLEEVE INTO ARMHOLE BELOW CORNERS, FOLLOWING SMALL \circ 'S AT UNDERARM (BELOW \square 'S). BASTE.

5 PIN GATHERED TOP OF SLEEVE TO ARMHOLE BETWEEN CORNERS, SO \circ 'S MEET SHOULDERS SEAM. HOLD SLEEVE TOWARD YOU AS YOU PIN BASTE AND STITCH

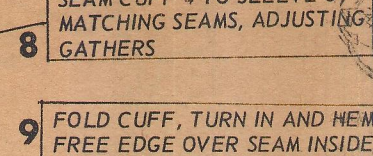
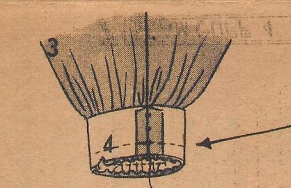


6 TRIM UNDERARM ON BODICE TO MATCH SLEEVE SEAM

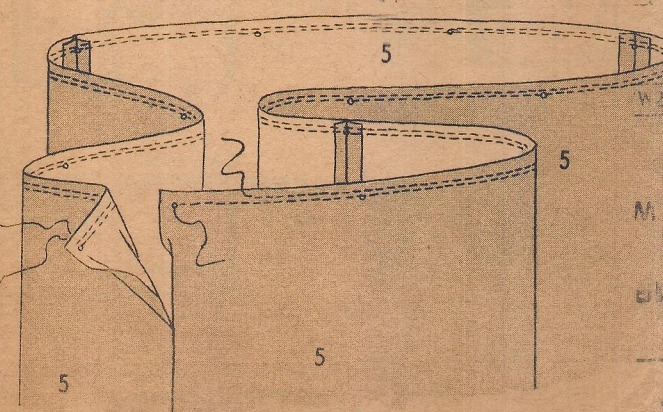
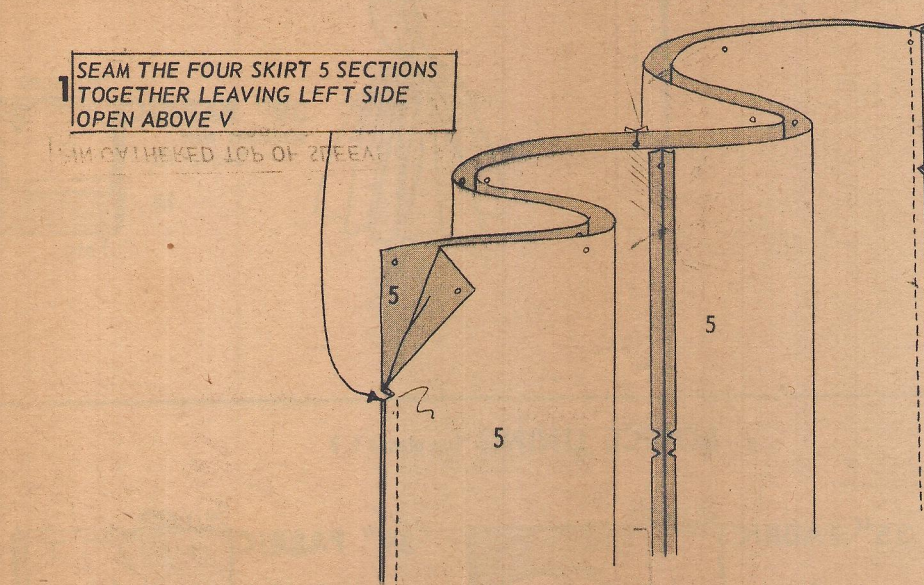
7 SEAM CUFF 4

8 SEAM CUFF 4 TO SLEEVE 3; MATCHING SEAMS, ADJUSTING GATHERS

9 FOLD CUFF, TURN IN AND HEM FREE EDGE OVER SEAM INSIDE

**SKIRT AND UNDERSKIRT—BODICE JOINING**

1 SEAM THE FOUR SKIRT 5 SECTIONS TOGETHER LEAVING LEFT SIDE OPEN ABOVE V

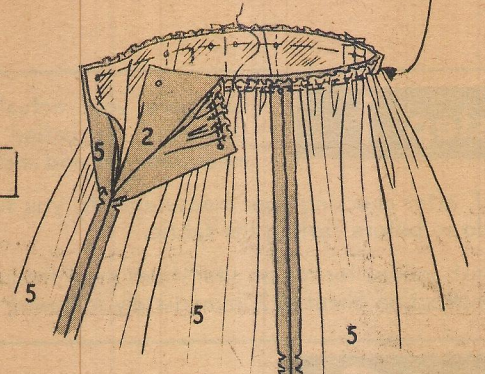


2 GATHER TOP

VIEW A

3 SEAM AND GATHER THE FOUR UNDER SKIRT 5 SECTIONS TOGETHER THE SAME WAY

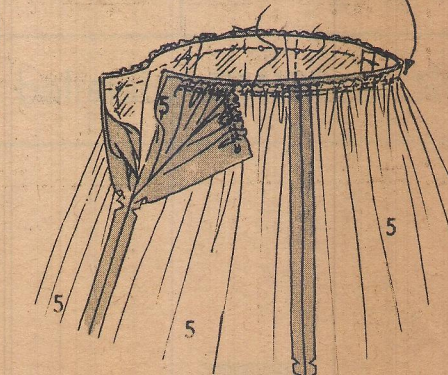
4 PIN SKIRT TO BODICE MATCHING SIDES AND CENTRES. ADJUST GATHERS AND BASTE



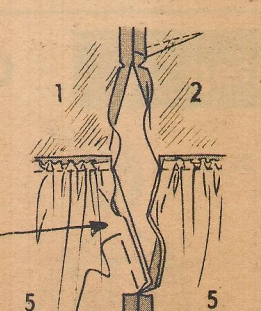
5 THEN BASTE UNDERSKIRT TO BODICE SAME AS SKIRT

BOTH VIEWS

6 STITCH WAIST-LINE



7 BASTE SIDE OPENING EDGES TOGETHER ON SKIRT AND UNDERSKIRT, CLIPPING SKIRT AT V

**ZIPPER—INSIDE BELTING**

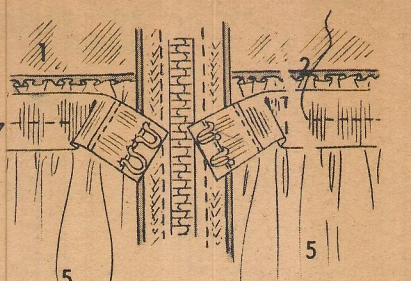
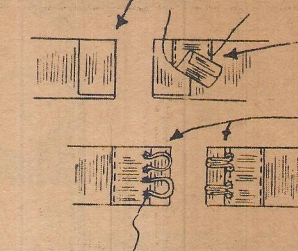
1 INSERT ZIPPER IN LEFT SIDE OPENING FOLLOWING DIRECTIONS ON ZIPPER PACKAGE

2 TURN IN ENDS OF BELTING TO FIT YOUR WAIST-LINE SNUGLY SO ENDS JUST MEET

3 FACE ENDS WITH RIBBON SEAM BINDING

4 HOOK ENDS

5 SEW BELTING TO WAIST-LINE SEAM INSIDE LEAVING ENDS LOOSE 1" FROM ZIPPER

**BUTTONING—HEM**

1 WORK BUTTONHOLES AT \square 'S ON RIGHT FRONT

2 SEW BUTTONS TO \square 'S ON LEFT SIDE

3 WEAR NOVELTY BELT

4 TRY ON DRESS, ADJUST LENGTH AND TURN UP HEM

**VIEW A**

5 MAKE DEEP HEM ON DRESS. TURN IN EDGE, PIN TO SKIRT AND HEM BY HAND

6 MAKE UNDERSKIRT 1/2" SHORTER. HEM IT THE SAME WAY

7 OR STITCH RIBBON SEAM BINDING TO EDGE OF HEM AND HEM THE BINDING TO SKIRT

VIEW B

8 HEM SKIRT SAME AS VIEW A UNDERSKIRT

